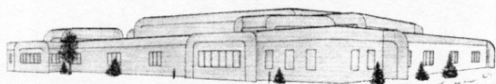


Program Facts continued:

Our program provides a quality education because it:

- Contracts speech language pathologists
- Involves parents
- Meets the needs of individual children
- Follows the MMH school calendar
- Requires typically developing children to be toilet trained upon entry (no pull ups or diapers).



155 Jerry Potts Blvd. • Lethbridge, Alberta T1K 6G8 • Phone 381-2211 • Fax 329-0547

**Early Registration is Encouraged
As Class Size is Limited**

Morning Classes:

8:45—11:30

Afternoon Classes:

12:15—3:00

**All Classes are
Monday through Thursday**

(Except 2-day programs —
these will be Mon./Wed. or Tues./Thurs.)

Friday mornings:

- Family Oriented Programming
- Consultations
- In-service/workshops

**Mike Mountain Horse
Elementary School**

155 Jerry Potts Boulevard West

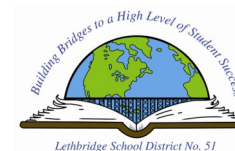
Lethbridge, AB T1K 6G8

Phone: 403-381-2211

Fax: 403-329-0547

E-mail: mtnhorse@lethsd.ab.ca

**LETHBRIDGE SCHOOL
DISTRICT #51**



**Mike Mountain Horse
Preschool Program
2012-2013**



Phone: 403-381-2211

**On the web at:
mmh.lethsd.ab.ca**

We Have a Special Spirit!

Mike Mountain Horse Preschool Program *Guiding Principles:*

- Every child learns—every child succeeds
- Experiences during preschool years are crucial to a child's learning and development
- A fun, safe and caring environment for child development
- Children learn through play
- Staff and families work as partners
- A team approach is used to address all areas of a child's development
- Active involvement in meaningful learning experiences includes challenges and successes
- An individualized approach promotes success for all
- Decision making and responsibilities are shared
- Children learn and reflect what they know in different ways
- Children's needs are identified early and proactive steps are taken to address potential problems before they come to elementary school
- Schools are ready to accept children and adapt their programs to ensure learning and success
- All children should have access to quality programs



Eligibility

Our preschool invites all 3 and 4 year old children who turn 3 or 4 years old by **September 1st**, in the year of entry to join our program

Cost

Only \$140 per month for 4 mornings or 4 afternoons per week

(Limited spaces for 2 times per week programs for 3 year olds: \$70.00 per month)

Families can contact
<http://www.child.alberta.ca/home/1167.cfm>

to see if they qualify for subsidy

To Register

To register please bring your child's Birth Certificate and Alberta Health Care Card

To have any other questions answered, please call Mike Mountain Horse at 403.381.2211

Children with assessed special educational needs may be eligible for full funding: call our Early Childhood Consultant, Ingrid Morden, at 403.380.5291 for details



Mike Mountain Horse Preschool Program *Program Facts:*

Our program provides a quality education because it:

- Is child centered, play-based and developmentally appropriate for your child
- Provides a comprehensive educational program
- Is taught by an experienced early childhood educator trained in "Learning Language and Loving It"
- Provides a team of assistants, an instructor and consultant especially trained to work with young children and their families
- Focuses on speech and language skills, gross and fine motor planning.
- Promotes early literacy and preschool skills.
- Provides an atmosphere of love and respect for every child.

Mike Mountain Horse Elementary School

**155 Jerry Potts Boulevard West
Lethbridge, AB T1K 6G8
Phone: 403-381-2211
Fax: 403-329-0547
E-mail: mtnhorse@lethsd.ab.ca**